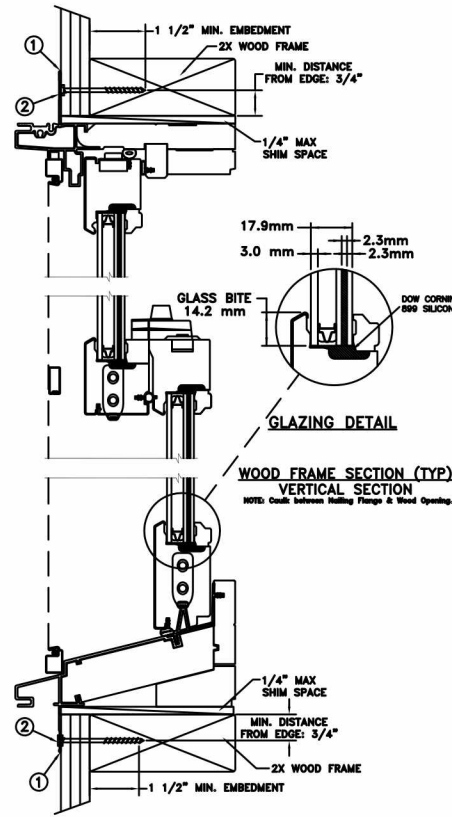
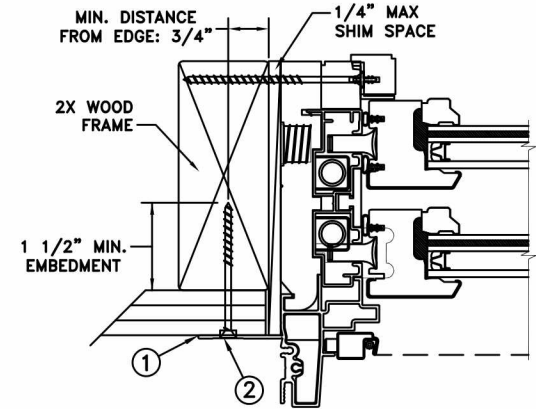


2 - FASTENERS PER WIND CLIP THRU BOTH SIDE JAMBS. WIND CLIP LOCATED FLUSH WITH TOP OF CHECK RAIL AND 4" DOWN FROM BTM OF 1ST WIND CLIP.

TYPICAL ELEVATION WITH FASTENER SPACING



NAIL FIN INSTALLATION



FRAME JAMB SECTION (TYP) HORIZONTAL SECTION

NOTE: Caulk between Nailing Flange & Wood Opening.

DOUBLE HUNG WINDOW

Max Frame	DP	IMPACT
41 3/8 x 76	+50/-65	YES

Installed Fastener Schedule:

1. Seal flange/frame to substrate.
2. Use #8 PH or greater fasteners through nail fin with sufficient length to penetrate a minimum of 1 1/2" into the wood framing. For 2X wood frame substrate (min. S.G. = 0.42).
3. Host structure (wood buck, stud framing and opening) to be designed and anchored to properly transfer all loads to the structure. The host structure is the responsibility of the architect or engineer of record for the project of installation.

This schedule addresses only the fasteners required to anchor the window to achieve the rated design pressure up to the size limitations noted. It is not intended as a guide to the installation process and does not address the sealing consideration that may arise in different wall conditions. For the complete installation procedure, see the instructions packaged with the window or go to www.jeld-wen.com.

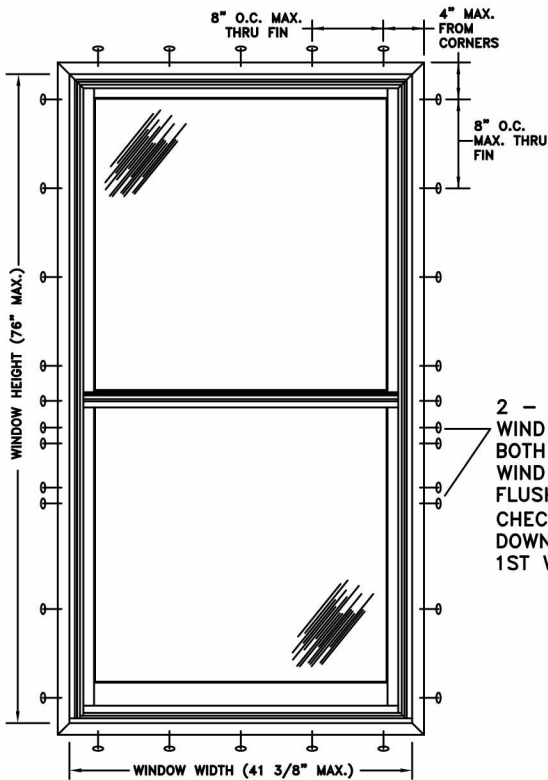
DISCLAIMER:

This drawing and its contents are confidential and are not to be reproduced or copied in whole or in part or used or disclosed to others except as authorized by JELD-WEN Inc.

General Notes:

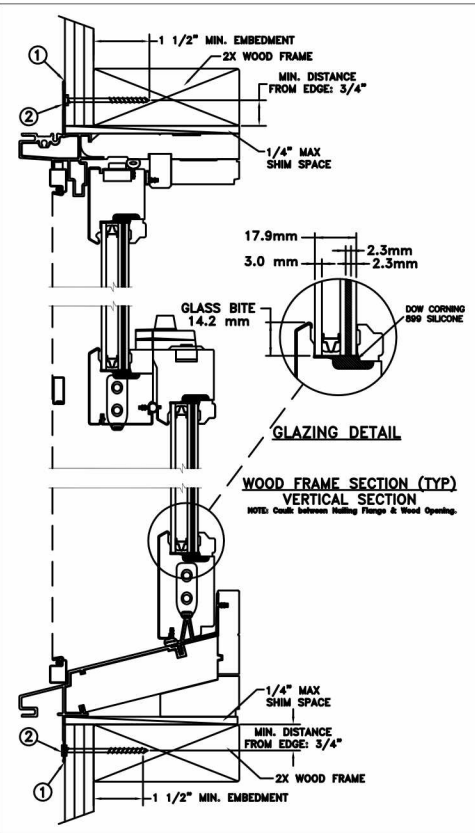
1. The product shown herein is designed, tested and manufactured to comply with the wind load criteria of the adopted International Building Code (IBC), the International Residential Code (IRC), the Florida Building Code (FBC) and the industry standard requirement for the stated conditions.
2. Buck, framing and masonry by others and is responsibility of architect or engineer of record.
3. All glazing shall conform to ASTM E1300.
4. At minimum, glazing is 3.0mm annealed - airspace - 2.3mm annealed - 2.3mm PVB Interlayer by DuPont - 2.3mm" annealed.
5. Maximum sizes are buck sizes and do not include fin or flange.

PROJECT ENGINEER: ---	DATE: 05/08/2015	JELD-WEN 3737 Lakeport Blvd Klamath Falls, OR. 97601 Phone: (800) 535-3936		
DRAWN BY: D. Vezo	SCALE: NTS			
CHECKED BY: J. Kantola	TITLE: Custom Clad Impact Single Hung with Wind Clips			
APPROVED BY: ---				
PART/PROJECT No.:				
D007305				
IDENTIFIER No.	PLANT NAME AND LOCATION: Bend, Oregon	CAD DWG. No.:	REV: 00	SHEET
		CustClImpactDHung		



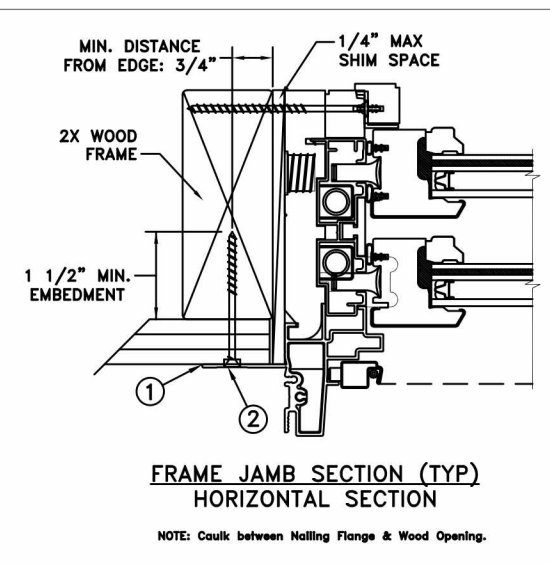
TYPICAL ELEVATION WITH FASTENER SPACING

2 - FASTENERS PER WIND CLIP THRU BOTH SIDE JAMBS. WIND CLIP LOCATED FLUSH WITH TOP OF CHECK RAIL AND 4\"/>



WOOD FRAME SECTION (TYP) VERTICAL SECTION
NOTE: Caulk between Nailing Flange & Wood Opening.

NAIL FIN INSTALLATION



FRAME JAMB SECTION (TYP) HORIZONTAL SECTION
NOTE: Caulk between Nailing Flange & Wood Opening.

DOUBLE HUNG WINDOW		
Max Frame	DP	IMPACT
41 3/8 x 76	+50/-65	YES

Installed Fastener Schedule:

1. Seal flange/frame to substrate.
2. Use #8 PH or greater fasteners through nail fin with sufficient length to penetrate a minimum of 1 1/2" into the wood framing. For 2X wood frame substrate (min. S.G. = 0.42).
3. Host structure (wood buck, stud framing and opening) to be designed and anchored to properly transfer all loads to the structure. The host structure is the responsibility of the architect or engineer of record for the project of installation.

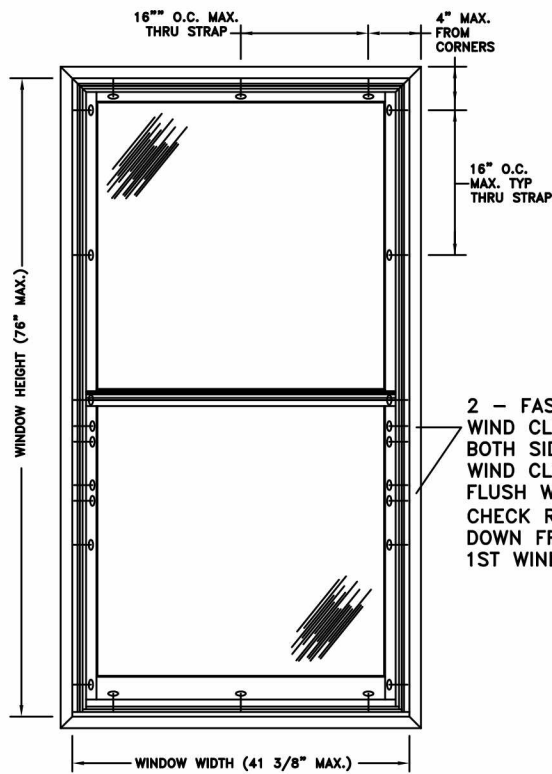
This schedule addresses only the fasteners required to anchor the window to achieve the rated design pressure up to the size limitations noted. It is not intended as a guide to the installation process and does not address the sealing consideration that may arise in different wall conditions. For the complete installation procedure, see the instructions packaged with the window or go to www.jeld-wen.com.

DISCLAIMER:
This drawing and its contents are confidential and are not to be reproduced or copied in whole or in part or used or disclosed to others except as authorized by JELD-WEN Inc.

General Notes:

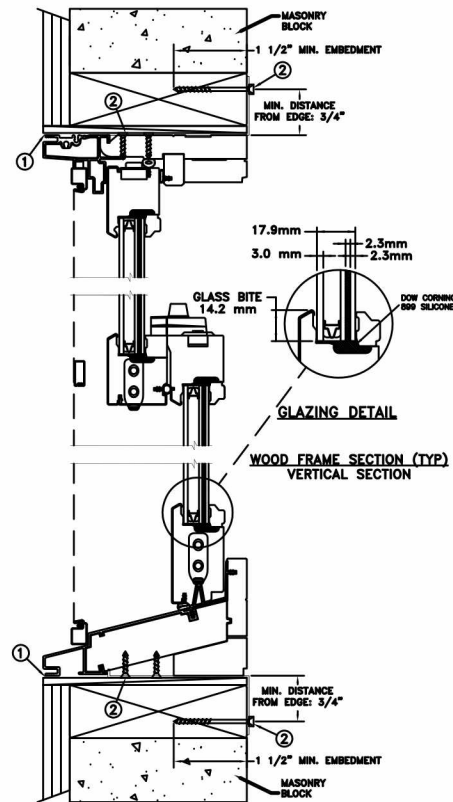
1. The product shown herein is designed, tested and manufactured to comply with the wind load criteria of the adopted International Building Code (IBC), the International Residential Code (IRC), the Florida Building Code (FBC) and the industry standard requirement for the stated conditions.
2. Buck, framing and masonry by others and is responsibility of architect or engineer of record.
3. All glazing shall conform to ASTM E1300.
4. At minimum, glazing is 3.0mm tempered - airspace - 2.3mm annealed - 2.3mm PVB Interlayer by DuPont - 2.3mm" annealed.
5. Maximum sizes are buck sizes and do not include fin or flange.

PROJECT ENGINEER: ---	DATE: 05/08/2015	JELD-WEN 3737 Lakeport Blvd Klamath Falls, OR. 97601 Phone: (800) 535-3936
DRAWN BY: D. Vezo	SCALE: NTS	
CHECKED BY: J. Kantola	TITLE: Custom Clad Impact Single Hung with Wind Clips	
APPROVED BY: ---		
PART/PROJECT No.: D007305		
IDENTIFIER No.	PLANT NAME AND LOCATION: Bend, Oregon	CAD DWG. No.: CustClImpactDHung
	REV: 00	SHEET

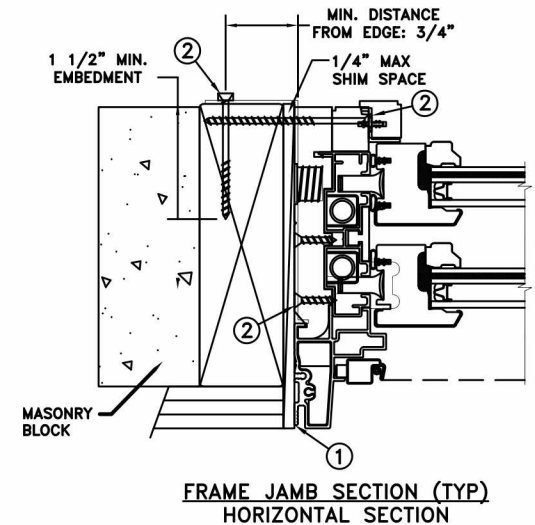


TYPICAL ELEVATION WITH FASTENER SPACING

2 - FASTENERS PER WIND CLIP THRU BOTH SIDE JAMBS. WIND CLIP LOCATED FLUSH WITH TOP OF CHECK RAIL AND 4\"/>



MASONRY STRAP INSTALLATION



FRAME JAMB SECTION (TYP) HORIZONTAL SECTION

DOUBLE HUNG WINDOW

Max Frame	DP	IMPACT
41 3/8 x 76	+50/-65	YES

Installed Fastener Schedule:

1. Seal flange/frame to substrate.
2. Install masonry straps to wood frame using #8 corrosion resistant fasteners no more than 4" from each corner and 16" o.c. along the jambs and head. Bend straps around buck and secure with #8 fastener thru masonry strap into buck. Fasteners must be long enough to penetrate at least 1 1/2" into framing members.
3. Host structure (wood buck, stud framing and opening) to be designed and anchored to properly transfer all loads to the structure. The host structure is the responsibility of the architect or engineer of record for the project of installation.

This schedule addresses only the fasteners required to anchor the window to achieve the rated design pressure up to the size limitations noted. It is not intended as a guide to the installation process and does not address the sealing consideration that may arise in different wall conditions. For the complete installation procedure, see the instructions packaged with the window or go to www.jeld-wen.com.

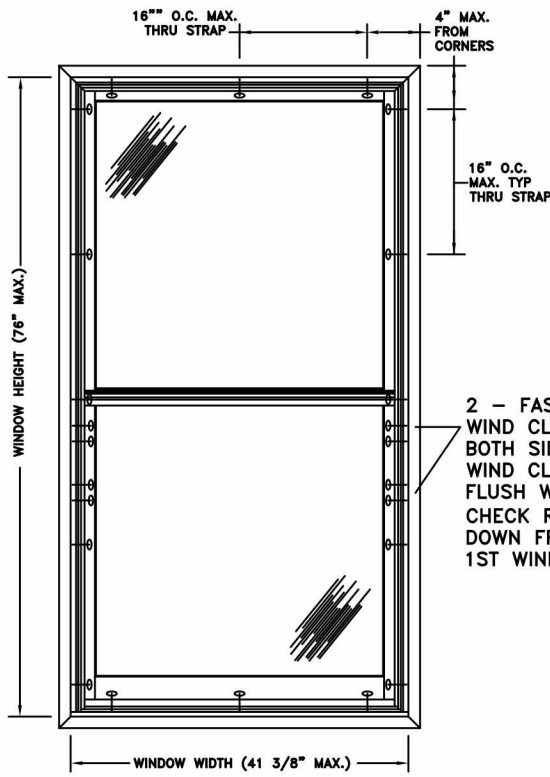
DISCLAIMER:

This drawing and its contents are confidential and are not to be reproduced or copied in whole or in part or used or disclosed to others except as authorized by JELD-WEN Inc.

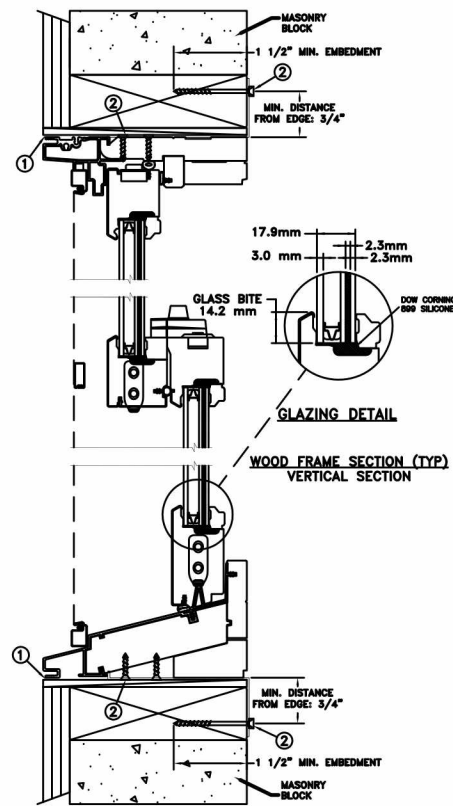
General Notes:

1. The product shown herein is designed, tested and manufactured to comply with the wind load criteria of the adopted International Building Code (IBC), the International Residential Code (IRC), the Florida Building Code (FBC) and the industry standard requirement for the stated conditions.
2. Buck, framing and masonry by others and is responsibility of architect or engineer of record.
3. All glazing shall conform to ASTM E1300.
4. At minimum, glazing is 3.0mm annealed - airspace - 2.3mm annealed - 2.3mm PVB Interlayer by DuPont - 2.2mm annealed.

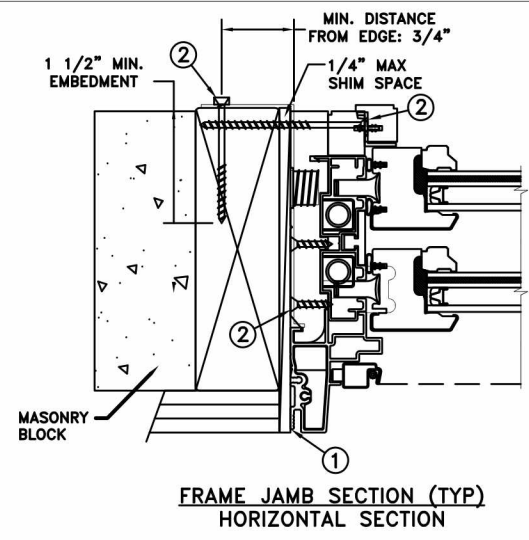
PROJECT ENGINEER: ---	DATE: 05/08/2015	JELD-WEN 3737 Lakeport Blvd Klamath Falls, OR. 97601 Phone: (800) 535-3936		
DRAWN BY: D. Vezo	SCALE: NTS			
CHECKED BY: J. Kantola	TITLE: Custom Clad Impact Single Hung with Wind Clips			
APPROVED BY: ---				
PART/PROJECT No.: D007305				
IDENTIFIER No.	PLANT NAME AND LOCATION: Bend, Oregon	CAD DWG. No.: CustClImpactDHung	REV: 00	SHEET



TYPICAL ELEVATION WITH FASTENER SPACING



MASONRY STRAP INSTALLATION



FRAME JAMB SECTION (TYP) HORIZONTAL SECTION

DOUBLE HUNG WINDOW		
Max Frame	DP	IMPACT
41 3/8 x 76	+50/-65	YES

Installed Fastener Schedule:

1. Seal flange/frame to substrate.
2. Install masonry straps to wood frame using #8 corrosion resistant fasteners no more than 4" from each corner and 16" o.c. along the jambs and head. Bend straps around buck and secure with #8 fastener thru masonry strap into buck. Fasteners must be long enough to penetrate at least 1 1/2" into framing members.
3. Host structure (wood buck, stud framing and opening) to be designed and anchored to properly transfer all loads to the structure. The host structure is the responsibility of the architect or engineer of record for the project of installation.

This schedule addresses only the fasteners required to anchor the window to achieve the rated design pressure up to the size limitations noted. It is not intended as a guide to the installation process and does not address the sealing consideration that may arise in different wall conditions. For the complete installation procedure, see the instructions packaged with the window or go to www.jeld-wen.com.

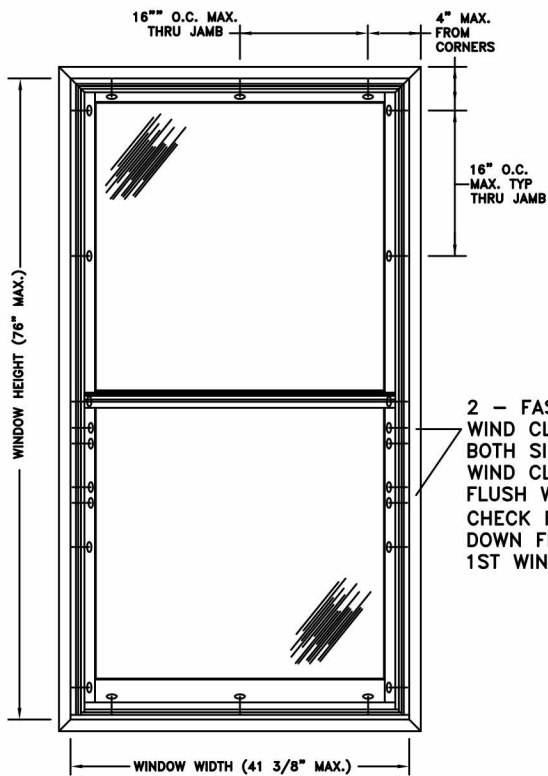
DISCLAIMER:

This drawing and its contents are confidential and are not to be reproduced or copied in whole or in part or used or disclosed to others except as authorized by JELD-WEN Inc.

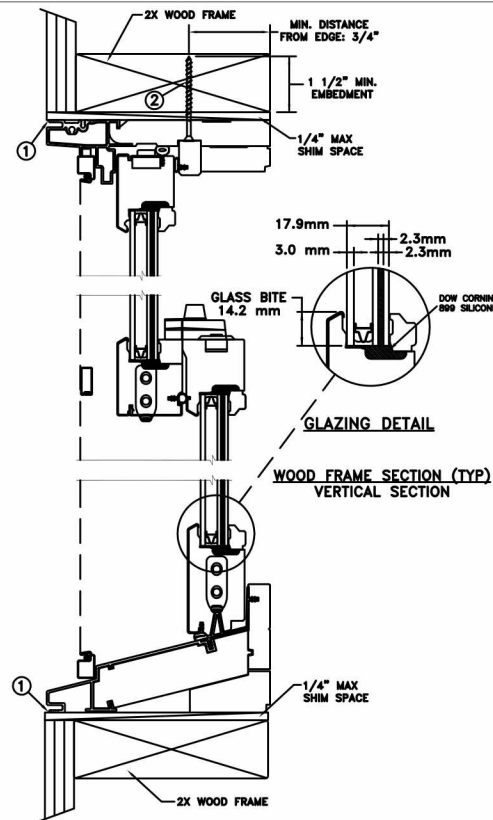
General Notes:

1. The product shown herein is designed, tested and manufactured to comply with the wind load criteria of the adopted International Building Code (IBC), the International Residential Code (IRC), the Florida Building Code (FBC) and the industry standard requirement for the stated conditions.
2. Buck, framing and masonry by others and is responsibility of architect or engineer of record.
3. All glazing shall conform to ASTM E1300.
4. At minimum, glazing is 3.0mm tempered - airspace - 2.3mm annealed - 2.3mm PVB Interlayer by DuPont - 2.2mm annealed.

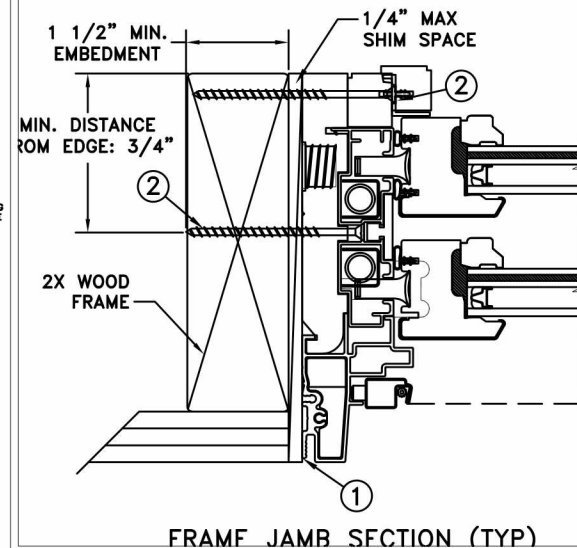
PROJECT ENGINEER: ---	DATE: 05/08/2015	JELD-WEN 3737 Lakeport Blvd Klamath Falls, OR. 97601 Phone: (800) 535-3936		
DRAWN BY: D. Vezo	SCALE: NTS			
CHECKED BY: J. Kantola	TITLE: Custom Clad Impact Single Hung with Wind Clips			
APPROVED BY: ---				
PART/PROJECT No.: D007305				
IDENTIFIER No.	PLANT NAME AND LOCATION: Bend, Oregon	CAD DWG. No.: CustClImpactDHung	REV: 00	SHEET



TYPICAL ELEVATION WITH FASTENER SPACING



THRU JAMB INSTALLATION



DOUBLE HUNG WINDOW

Max Frame	DP	IMPACT
41 3/8 x 76	+50/-65	YES

Installed Fastener Schedule:

1. Seal flange/frame to substrate.
2. Use #8 PH or greater fasteners through jamb with sufficient length to penetrate a minimum of 1 1/2" into the wood framing. For 2X wood frame substrate (min. S.G. = 0.42).
3. Host structure (wood buck, stud framing and opening) to be designed and anchored to properly transfer all loads to the structure. The host structure is the responsibility of the architect or engineer of record for the project of installation.

This schedule addresses only the fasteners required to anchor the window to achieve the rated design pressure up to the size limitations noted. It is not intended as a guide to the installation process and does not address the sealing consideration that may arise in different wall conditions. For the complete installation procedure, see the instructions packaged with the window or go to www.jeld-wen.com.

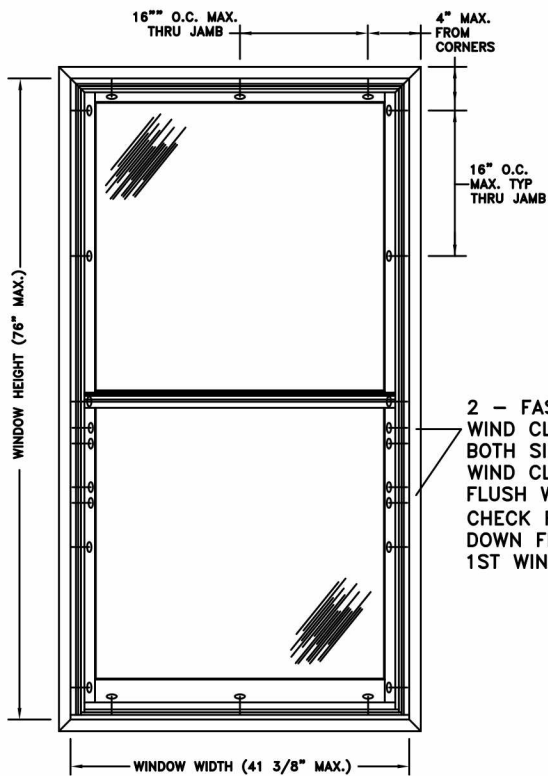
DISCLAIMER:

This drawing and its contents are confidential and are not to be reproduced or copied in whole or in part or used or disclosed to others except as authorized by JELD-WEN Inc.

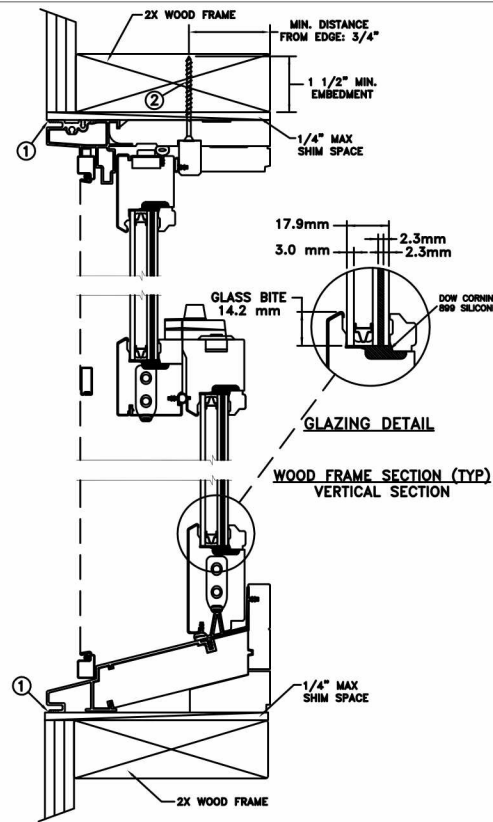
General Notes:

1. The product shown herein is designed, tested and manufactured to comply with the wind load criteria of the adopted International Building Code (IBC), the International Residential Code (IRC), the Florida Building Code (FBC) and the industry standard requirement for the stated conditions.
2. Buck, framing and masonry by others and is responsibility of architect or engineer of record.
3. All glazing shall conform to ASTM E1300.
4. At minimum, glazing is 3.0mm annealed - airspace - 2.3mm annealed - 2.3mm PVB Interlayer by DuPont - 2.3mm" annealed.

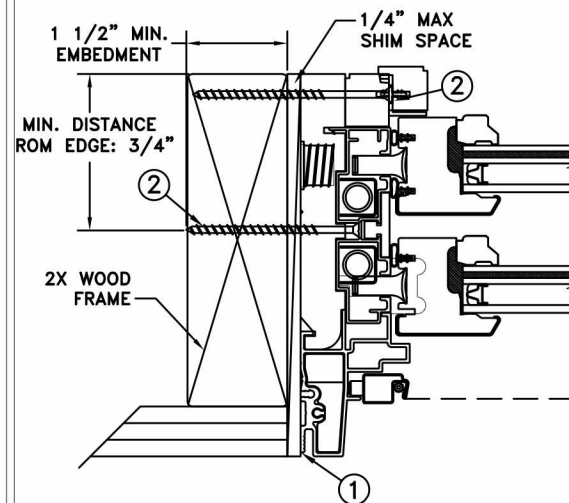
PROJECT ENGINEER: ---	DATE: 05/08/2015	JELD-WEN 3737 Lakeport Blvd Klamath Falls, OR. 97601 Phone: (800) 535-3936		
DRAWN BY: D. Vezo	SCALE: NTS			
CHECKED BY: J. Kantola	TITLE: Custom Clad Impact Single Hung with Wind Clips			
APPROVED BY: ---				
PART/PROJECT No.: D007305				
IDENTIFIER No.	PLANT NAME AND LOCATION: Bend, Oregon	CAD DWG. No.: CustClImpactDHung	REV: 00	SHEET



TYPICAL ELEVATION WITH FASTENER SPACING



THRU JAMB INSTALLATION



FRAME JAMB SECTION (TYP)

DOUBLE HUNG WINDOW

Max Frame	DP	IMPACT
41 3/8 x 76	+50/-65	YES

Installed Fastener Schedule:

1. Seal flange/frame to substrate.
2. Use #8 PH or greater fasteners through jamb with sufficient length to penetrate a minimum of 1 1/2" into the wood framing. For 2X wood frame substrate (min. S.G. = 0.42).
3. Host structure (wood buck, stud framing and opening) to be designed and anchored to properly transfer all loads to the structure. The host structure is the responsibility of the architect or engineer of record for the project of installation.

This schedule addresses only the fasteners required to anchor the window to achieve the rated design pressure up to the size limitations noted. It is not intended as a guide to the installation process and does not address the sealing consideration that may arise in different wall conditions. For the complete installation procedure, see the instructions packaged with the window or go to www.jeld-wen.com.

DISCLAIMER:

This drawing and its contents are confidential and are not to be reproduced or copied in whole or in part or used or disclosed to others except as authorized by JELD-WEN Inc.

General Notes:

1. The product shown herein is designed, tested and manufactured to comply with the wind load criteria of the adopted International Building Code (IBC), the International Residential Code (IRC), the Florida Building Code (FBC) and the industry standard requirement for the stated conditions.
2. Buck, framing and masonry by others and is responsibility of architect or engineer of record.
3. All glazing shall conform to ASTM E1300.
4. At minimum, glazing is 3.0mm tempered - airspace - 2.3mm annealed - 2.3mm PVB Interlayer by DuPont - 2.3mm" annealed.

PROJECT ENGINEER: ---	DATE: 05/08/2015	JELD-WEN 3737 Lakeport Blvd Klamath Falls, OR. 97601 Phone: (800) 535-3936		
DRAWN BY: D. Vezo	SCALE: NTS			
CHECKED BY: J. Kantola	TITLE: Custom Clad Impact Single Hung with Wind Clips			
APPROVED BY: ---				
PART/PROJECT No.: D007305				
IDENTIFIER No.	PLANT NAME AND LOCATION: Bend, Oregon	CAD DWG. No.: CustClImpactDHung	REV: 00	SHEET